

# ***Welcome to***



## ***Public Outreach Open House***

### ***Sponsored by the Kane County Board***

*Funding support for this open house provided in part by  
the United Way of Elgin and the United Way of the Fox Valley*



# Public Outreach Open Houses

## EXHIBIT GUIDE



### Then

- A Rich History in Planning
- 175<sup>th</sup> Anniversary of Kane County's Incorporation
- 1840 Landscape Map

### Now

- Stearns Road Bridge Corridor
- Kane County's Landmark Program
- Essential Services of Public Health
- 2011 County Health Rankings
- Housing Assistance Programs
- Kane County Fiber Optic Investment
- Kane County Farmland Protection Program
- Employment and Education Services
- Making Kane County Fit For Kids
- Healthy Communities Workshop Series

### Tomorrow

- Quality of Kane Initiative
- 2040 Conceptual Land Use Strategy
- Kane County Energy Plan Goals
- IL 47 Corridor Planning Study
- Randall/Orchard Corridor BRT Feasibility Study
- 2040 Transportation Plan
- 2040 Transit Plan
- Kane County Community Health Action Plan
- Fit For Kids 2020

# QUALITY OF KANE

*Healthy People, Healthy Living, Healthy Communities*

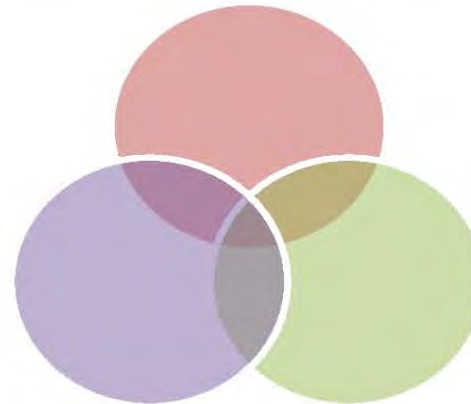
## Community Health & Reinvestment

- Fit Kids 2020 Plan
- 2011 Comprehensive Community Health Assessment
- 2012-2016 Community Health Action Plan



## Transportation

- 2040 Transportation Plan
- Bicycle/Pedestrian Plan
- 2040 Transit Plan
- IL 47 Corridor Planning Study
- Bus Rapid Transit Study
- Route 529 Study



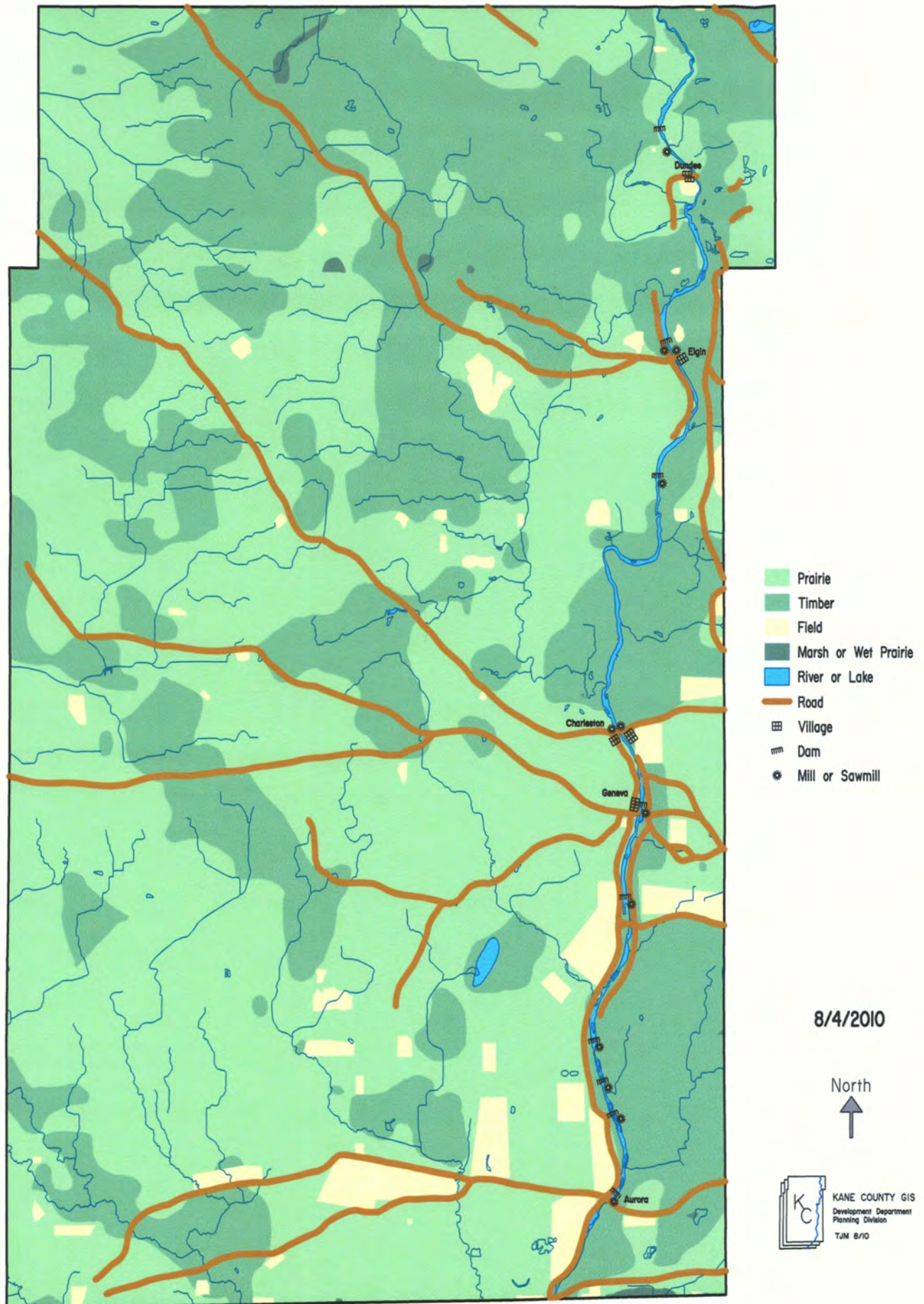
## Land Use

- 2040 Conceptual Land Use Strategy
- IL 47 Corridor Planning Study
- Energy Plan
- Water Resources
- Farmland Preservation and Local Foods
- Local Planning Coordination/ Assistance



## Community Investment

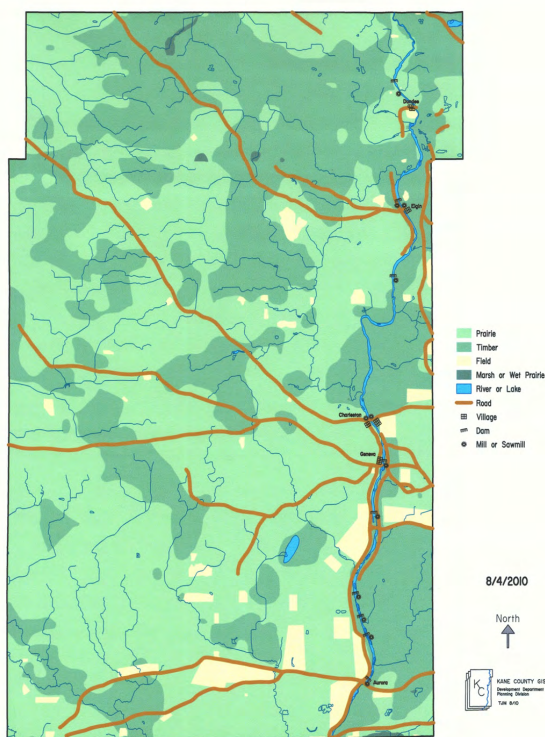
# 1840 LANDSCAPE



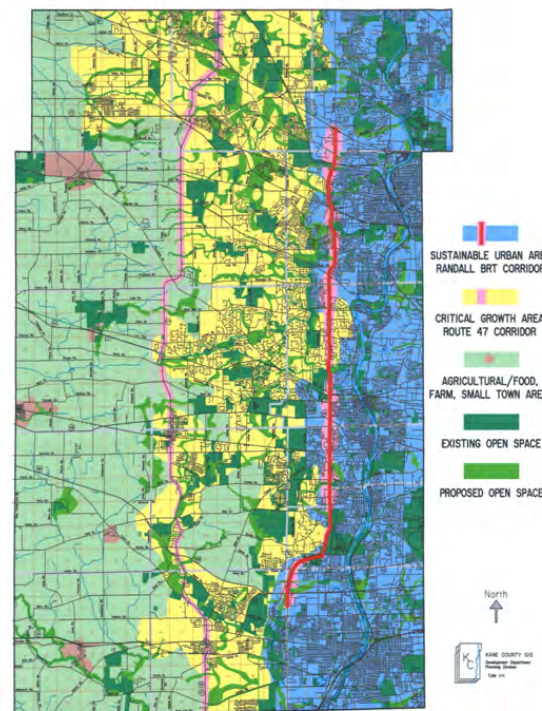
# 1840-2040

## 200 Years of settlement, development, preservation and planning...

1840 LANDSCAPE



2040 CONCEPTUAL LAND  
USE STRATEGY MAP



# A Rich History in Planning

## Land Resource Management Plan Awards:

- Metropolitan Planning Council – 2005 Burnham Award for Excellence in Planning (for the 2030 LRMP)
- 1998 Richard H. Driehaus Foundation Preservation Award for Leadership in Resource Protection and Planning (for the 2020 LRMP)



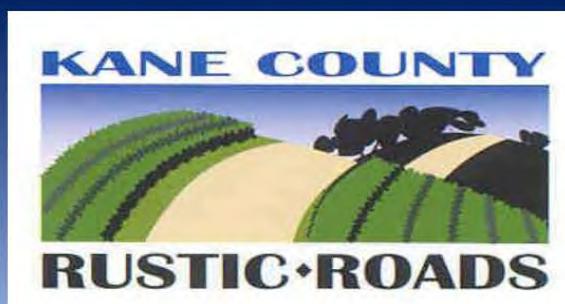
## Water Supply Planning Awards:

- ISWS Leadership Award in Water Supply Planning
- ISGS Outstanding External Cooperator
- IDNR/IEPA Shining Star in Groundwater Protection

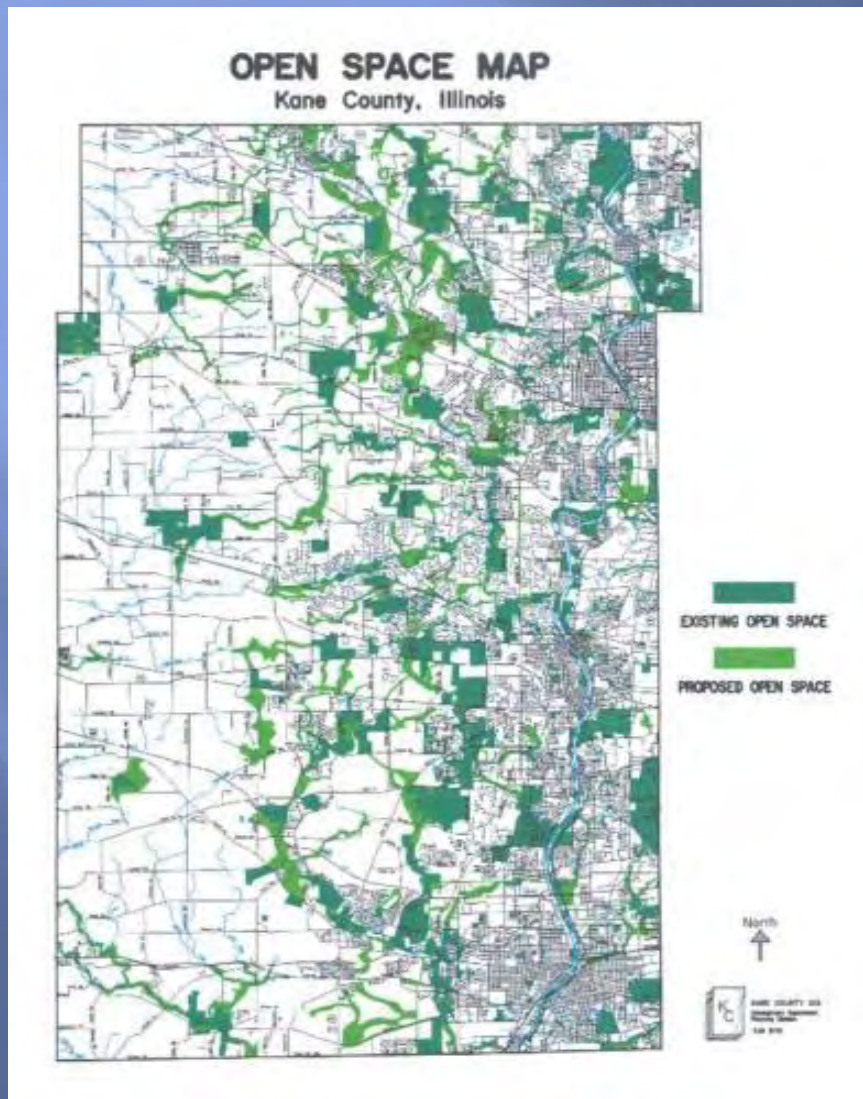


# Kane County's Historic Preservation Program

First County in Illinois to Adopt a Preservation Ordinance

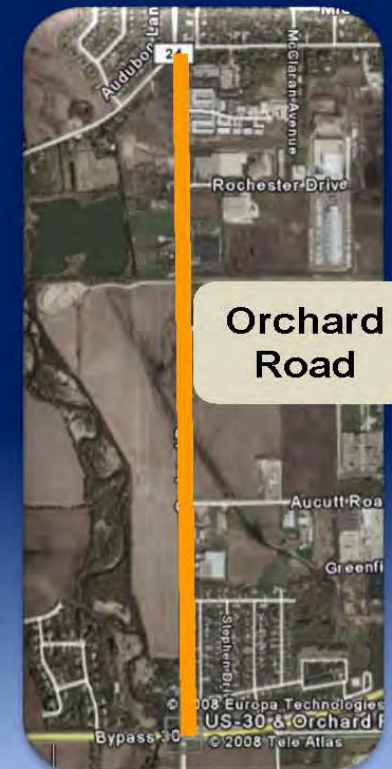


# Open space protection, greenway implementation, and water resource management



# Current Transportation Priorities

- Stearns Bridge Corridor
- IL 47/I-90 Interchange
- Longmeadow Bridge Corridor
- Orchard – Jericho to US 30
- Anderson/UP RR Overpass
- Intersection Improvements
- Pavement resurfacing
- Bridge improvement projects



## Kane County Farmland Protection Program

### Program Summary

Since 2001 over 5500 acres have been **permanently protected** in Kaneville, Big Rock, Virgil, Burlington, Plato and Campton Townships. The Kane County Board and the Federal Farm and Ranchlands Program have invested over \$ 32.6 million dollars to create Agricultural Conservation Easements to insure agriculture continues in perpetuity.



2009 approved farms to be closed in 2011

Rahr/Long	Kaneville	90 acres
Seppelfrick	Kaneville	156 acres
Olson	Kaneville	75 acres
Meredith	Kaneville	162 acres

### Kane County Farmland Protection Program 2001 – 2010

#### 5,516 Protected Acres

\$ 19,977,447.76 Kane County Riverboat Funded  
\$ 12,625,206.32 Federal Protection Funds

**\$ 32,602,653.08 Total Investment**



### Farm Protected Acreage Year Protected

Mangers Farm (KA)	119	2002
Strom Farm (CA)	166	2002
Herrmann Farm (BR)	97	2002
R. Peterson Farm (VI)	62	2002
L. Peterson Farm (VI)	39	2002
Chiapetti Farm (BR)	130	2002
Evans Farm (BR)	71	2002
Flanders Farm (KA)	381	2002
Carlson Farm (KA)	129	2002
Zales Farm (KA)	158	2002
K. Mangers Farm (KA)	66	2002
Perry/Maxsedt Farm (KA)	91	2002
Allen Farm (KA)	135	2003
Kaus Farm (KA)	116	2003
Werdin Farm (KA)	322	2003
Bomleny Farm (KA)	134	2004
Wolf Farm (KA)	94	2004
Flint Farm (KA)	284	2004
Shoeger Farm (BR)	141	2004
Anderson Farm (BR)	128	2004
Pitstick Farm (KA)	66	2004
Davis Farm (BR)	37	2005
Schleifer Farm (KA)	82	2005
Sorenson Farm (BR)	92	2005
Rosenwinkel Farm (BR)	187	2006
Ruh Farm (BR)	302	2006
Farley Farm (KA)	253	2006
Grever Farm (KA)	65	2006
Schramer Farm (BU)	83	2007
Dienst Farm (VI)	234	2007
Long Farm (KA)	72	2008
Flint Farm (KA)	75	2008
Bomleny Farm (KA)	144	2008
Olson Farm (KA)	100	2008

**10<sup>TH</sup> ANNIVERSARY**

# Kane County Farmland Protection Program

**5,516 permanently protected acres**

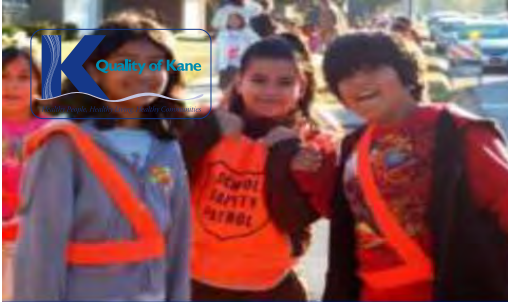
# Community Investment



## Reinvesting in Education, Environment & Economic Development

- Literacy programs
- Water, sewer, stream bank stabilization
- Streetscape improvements
- Capital funding for food banks, mental health, housing and historical societies

In 2010 the County Board approved a resolution to fund nearly \$2.2 Million in projects, creating 2,170 temporary or full-time jobs



# A Healthy Communities Workshop Series

Hosted by the Kane County Board



2009  
2011  
2012

Smart Growth IS Healthy Living  
Bring Healthy Living to Your Community  
*TO BE CONTINUED....*





# Ride In Kane



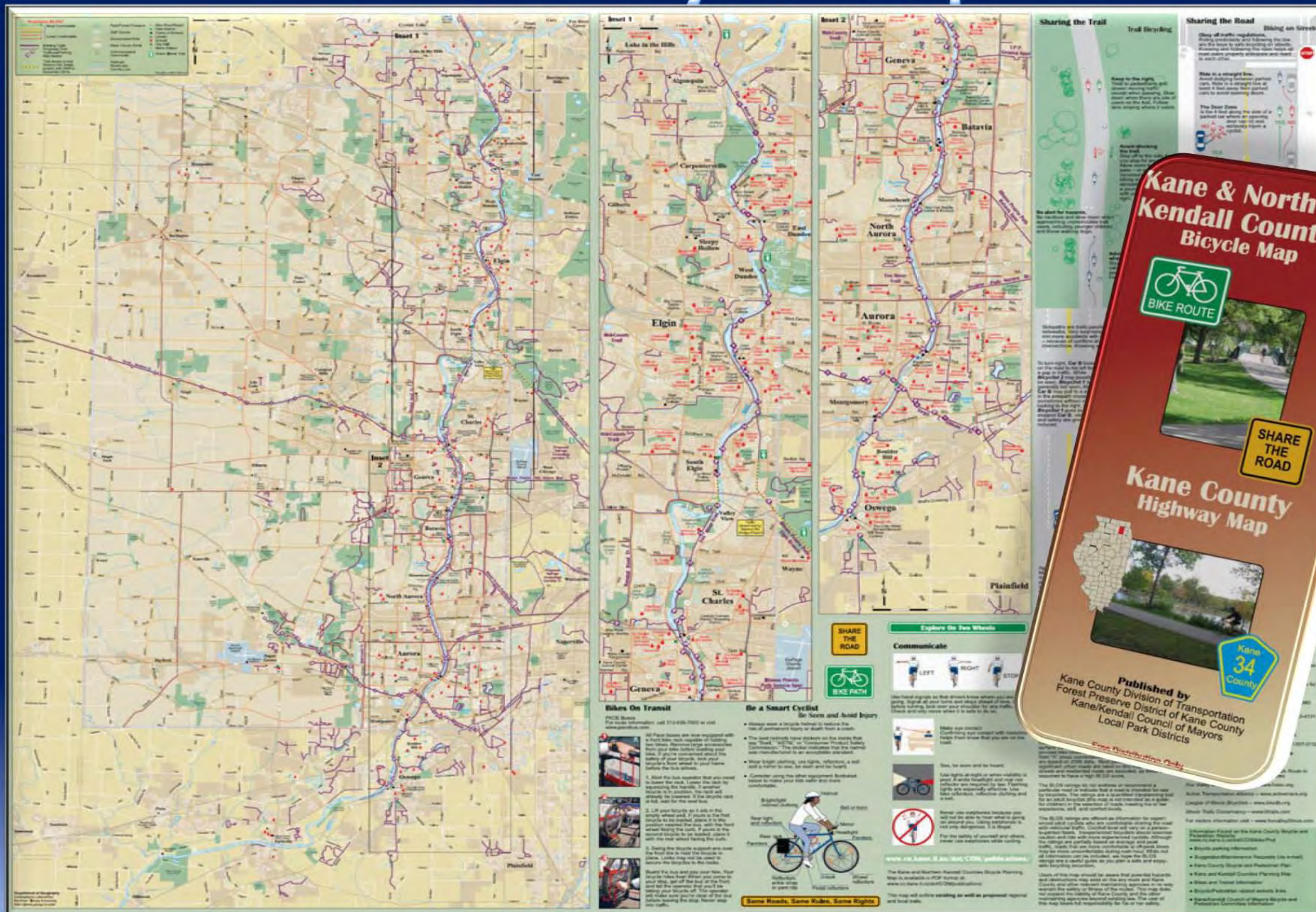
*Curb to curb, dial a ride Paratransit service for Kane County seniors, persons with disabilities & low income individuals traveling to and from work (or related activities)*

- *Ride in Kane (RIK) Program* started operations in 2008
- Service is available to individuals deemed eligible based on Sponsor and funding requirements
- Service provided by taxis, vans & Pace lift-equipped buses
- \$3 one-way up to 10 miles - \$1.50 each additional mile
- Call Center reservations



**Register with a Sponsor  
888-480-8549**

# Public Bicycle Map





# Stearns Road Bridge Corridor

A Fox River Bridge at the center of an environmental corridor

- \$146.8 M investment and over 20 years in planning
- 9 Highway bridges
- New multi-use trail Bridge over river, 2 new multi-use trail underpasses, interconnect to 3 regional trails
- Enhanced 216 acres of new open space
- Awarded for:
  - Excellence for Efforts in Conservation of Land & Water Resources (KDSWCD)
  - Honor Award (ACEC)
  - Contractor of the Year Award (Lake County Grading)
  - Public Works Excellence (APWA Fox Valley Branch & Metro Chicago)



KANE COUNTY HEALTH DEPARTMENT

# 2006 COMMUNITY HEALTH ASSESSMENT

2006 COMMUNITY  
HEALTH ACTION  
PLAN

CREATED COMMUNITY PARTNERSHIPS



MENTAL HEALTH  
COUNCIL



CIRCLES OF  
WISE WOMEN



BREASTFEEDING  
COALITION



PERINATAL  
COMMITTEE



COALITION FOR  
HEALTH  
& WELLNESS



KCHAIN



HEALTHY  
HOMES



KANE KARES



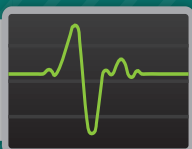
ENVIRONMENTAL  
HEALTH  
COALITION



HELP FOR  
HOMEOWNERS



MAKING KANE  
COUNTY FIT  
FOR KIDS



KANE COUNTY VITAL SIGNS  
*Progress Report*



COUNTY HEALTH  
RANKINGS

2011  
COMMUNITY  
HEALTH  
ASSESSMENT

# QUALITY OF KANE

*Healthy People, Healthy Living, Healthy Communities*

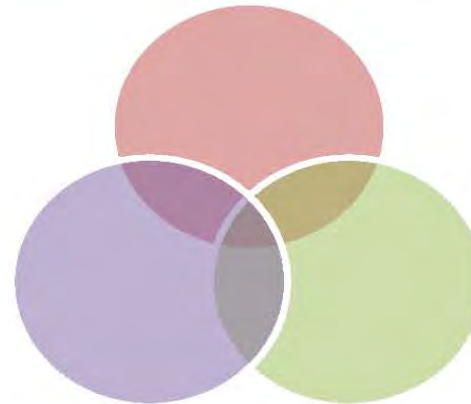
## Community Health & Reinvestment

- Fit Kids 2020 Plan
- 2011 Comprehensive Community Health Assessment
- 2012-2016 Community Health Action Plan



## Transportation

- 2040 Transportation Plan
- Bicycle/Pedestrian Plan
- 2040 Transit Plan
- IL 47 Corridor Planning Study
- Bus Rapid Transit Study
- Route 529 Study



## Land Use

- 2040 Conceptual Land Use Strategy
- IL 47 Corridor Planning Study
- Energy Plan
- Water Resources
- Farmland Preservation and Local Foods
- Local Planning Coordination/ Assistance

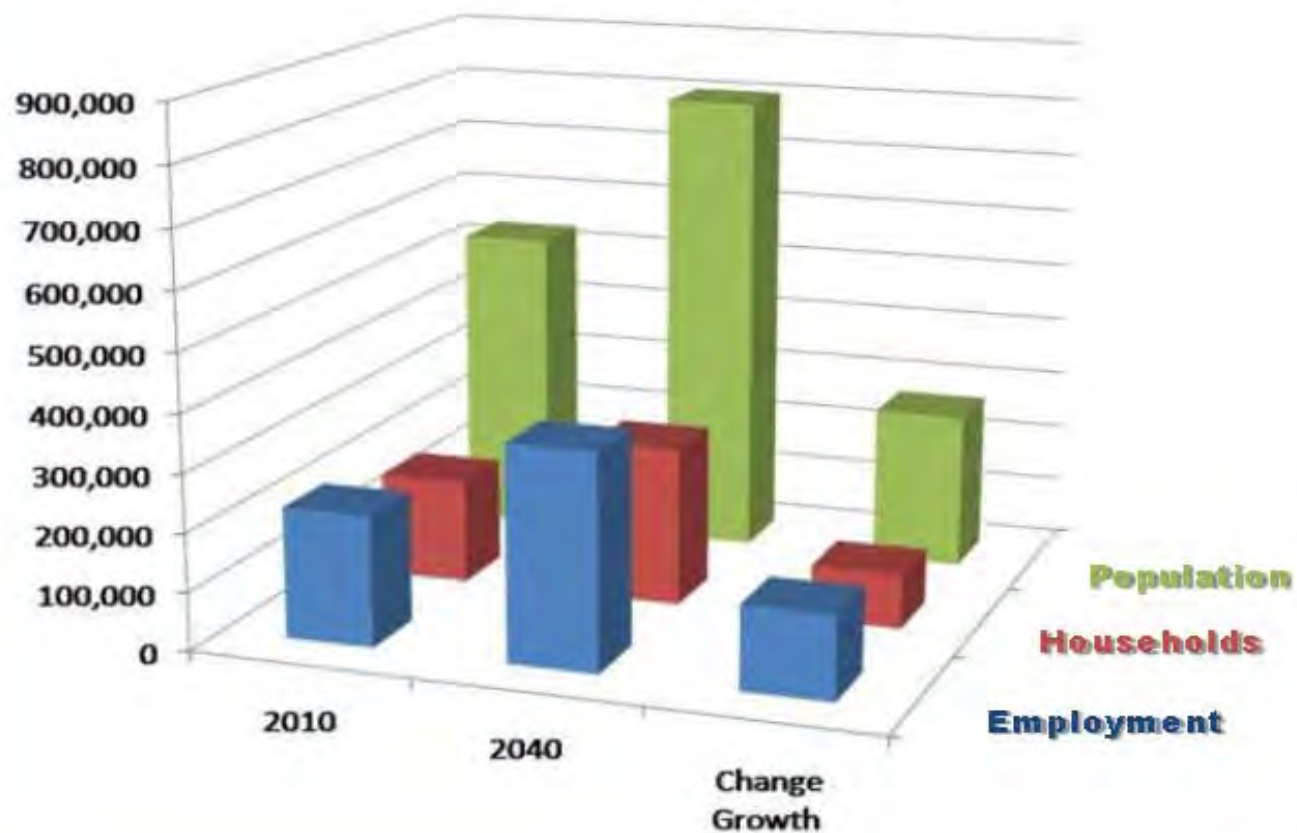


## Community Investment

# 2040 Planning Program Timeline



## Population, Households, and Employment for Kane County, IL



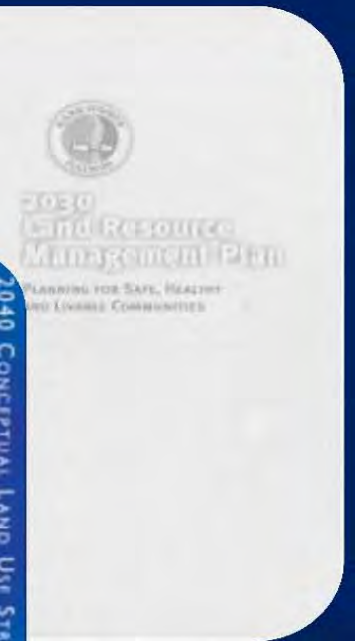
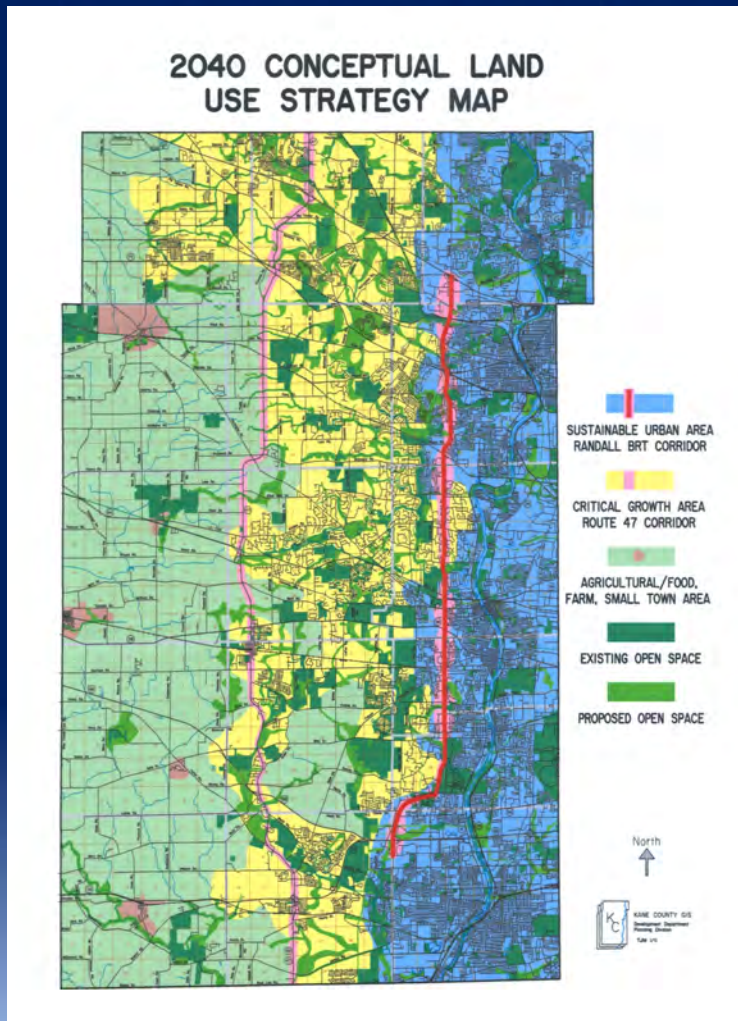
### Population, Households, and Employment, Kane County, IL

	2010	2040	Change in Growth	
Population	532,852	802,231	269,379	51%
Households	179,702	274,085	94,383	53%
Employment	224,546	368,494	143,947	64%

Source: Chicago Metropolitan Agency for Planning, 2010.

# 2040 Land Use Plan

Healthy People, Healthy Living, Healthy Communities



- Sustainable Urban Area
- Critical Growth Area
- Agricultural/Food, Farm, and Small Town Area

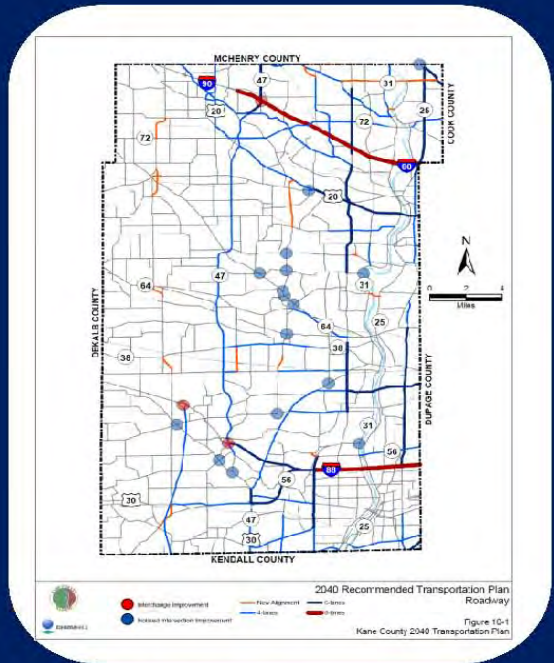
# 2040 Transportation Plan

- Determines major roadway projects
- Improves public safety, traffic operations, access to public transportation
- Accommodates all users
- Minimizes deterioration of County Highway system
- Reduces future maintenance costs

## 3 Main Elements:

1. Roadway improvements
2. Bicycle/Pedestrian facilities
3. Transit recommendations  
(including BRT for Randall/Orchard)

*Est. completion Fall 2011*



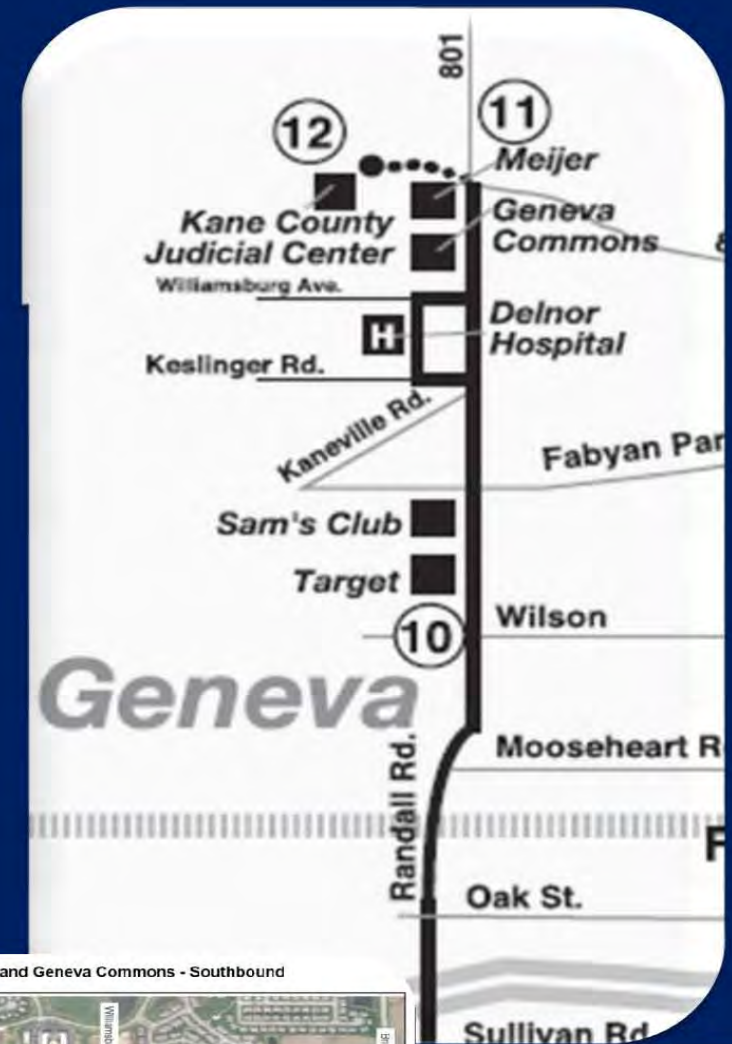
NATIONAL  
COMPLETE STREETS  
COALITION

# Pace Route 529 Study

## *Improved Access to Transit*

- Details infrastructure improvements (sidewalk locations, signage, shelters, bus turnouts)
- Provides land use design guidelines and recommends improved access to transit
- Implementation underway  
~ \$800K infrastructure grant

Now available online





# 2040 Randall/Orchard Bus Rapid Transit Study

## Study will:

- Identify conditions required for successful BRT operation in 2040
- Evaluate potential benefits from BRT service in Randall/Orchard Road corridor

## Why BRT:

- Incremental implementation
- High quality transit service
- Improved customer experience
- Shorten trip lengths and reduce growth in VMT
- Shift trips to transit
- Create vibrant, livable communities
- Foster economic development





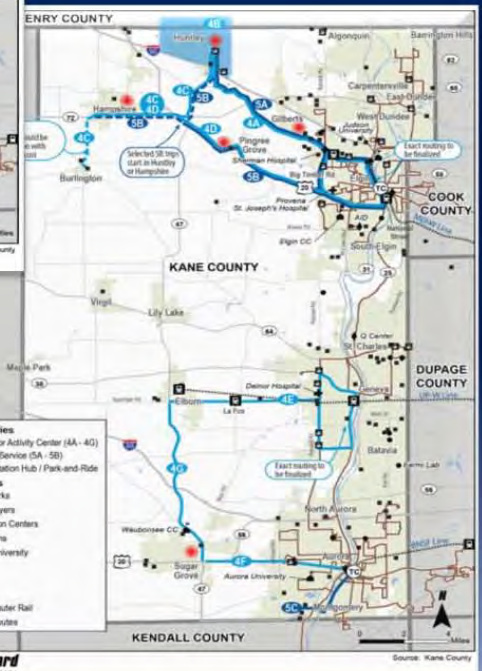
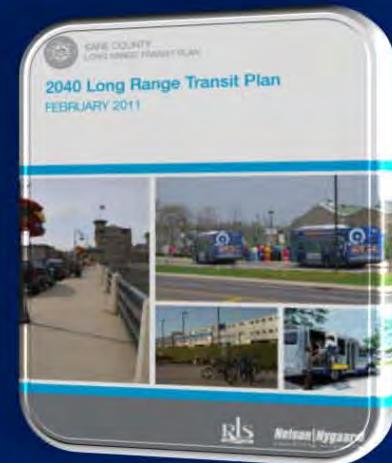
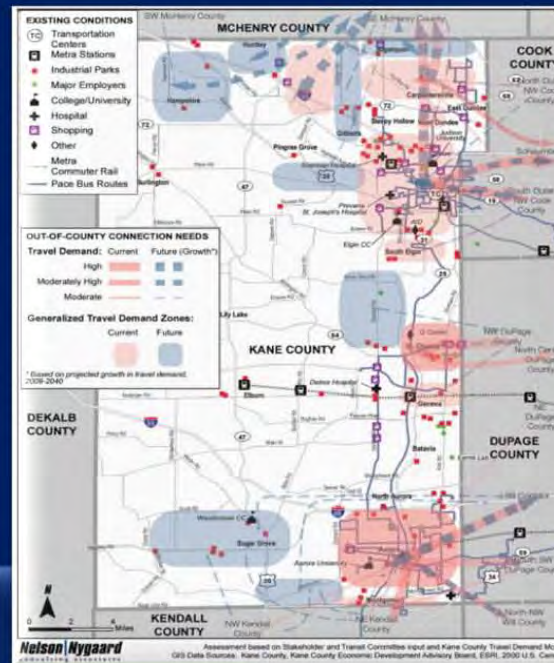
# 2040 Transit Plan

## 3 Main strategic approaches:

1. Land use policies
2. Service strategies
3. Transit Supportive strategies

Recognizes that transit funding is limited and recommends municipal/employer sponsored services in the near-medium term future.

Now available online



# Accommodating Bicycles & Pedestrians

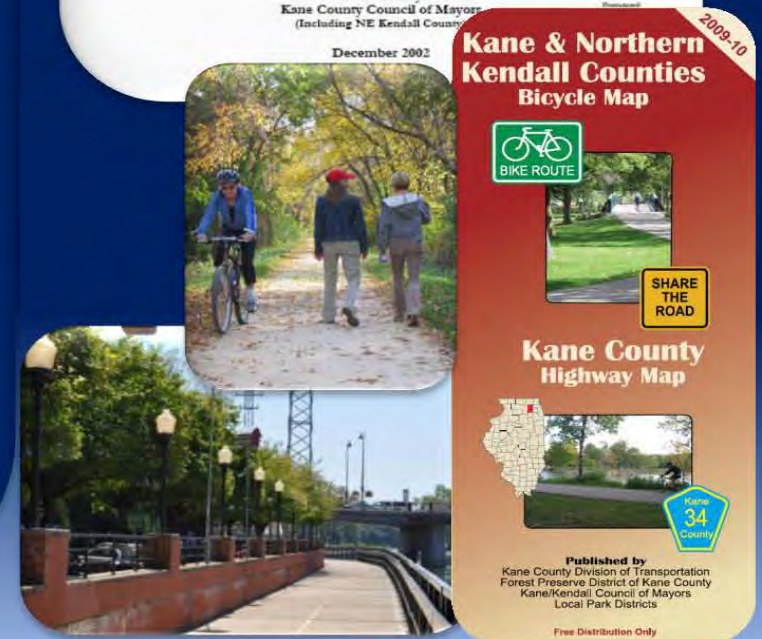
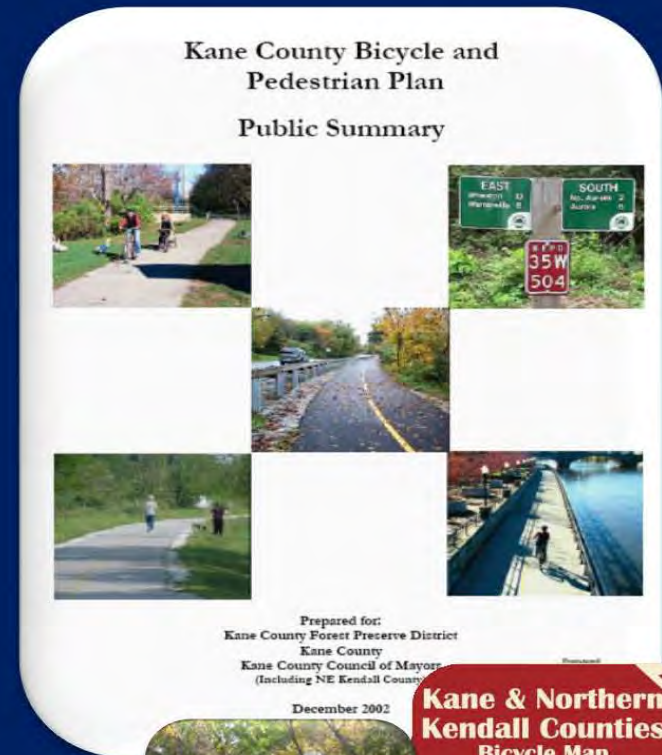
## County's Bike/Ped Plan includes:

- Inventory of existing facilities
- Planned facilities
- Design guidelines
- Policy recommendations

The County has initiated a Bike/Ped Plan update

The County publishes Public Bicycle and Highway Map and updates Planned Facilities Map bi-annually.

Now available online





KANE COUNTY HEALTH DEPARTMENT

# 2011 COMMUNITY HEALTH ASSESSMENT

COMPLETED PLANS



**FIT KIDS  
2020 PLAN**



**2010-2014 HOUSING  
AND COMMUNITY  
DEVELOPMENT  
CONSOLIDATED PLAN**

IN PROGRESS PLANS



**KANE COUNTY  
HEALTH DEPT  
STRATEGIC PLAN**

**AOK**

**ALL OUR KIDS (AOK)  
STRATEGIC PLAN**



**ANALYSIS OF  
IMPEDIMENTS TO  
FAIR HOUSING**



**2040  
LAND RESOURCE  
MANAGEMENT PLAN**



**2011 COMMUNITY  
HEALTH ACTION  
PLAN**



**PUBLIC HEALTH  
ACCREDITATION  
BY PHAB**



**KANE COUNTY VITAL SIGNS**  
*Progress Report*



**KANE COUNTY HEALTH DEPARTMENT VISION:  
TO HAVE THE HEALTHIEST PEOPLE IN ILLINOIS BY 2030**

Funding support for these community meetings provided in part by the United Way of Elgin and the United Way of the Fox Valley.

# QUALITY OF KANE

*Healthy People, Healthy Living, Healthy Communities*

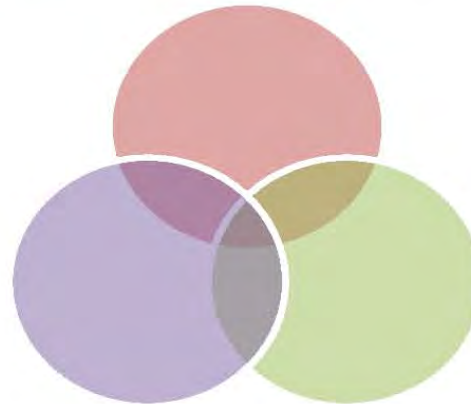
## Community Health & Reinvestment

- Fit Kids 2020 Plan
- 2011 Comprehensive Community Health Assessment
- 2012-2016 Community Health Action Plan



## Transportation

- 2040 Transportation Plan
- Bicycle/Pedestrian Plan
- 2040 Transit Plan
- IL 47 Corridor Planning Study
- Bus Rapid Transit Study
- Route 529 Study



## Land Use

- 2040 Conceptual Land Use Strategy
- IL 47 Corridor Planning Study
- Energy Plan
- Water Resources
- Farmland Preservation and Local Foods
- Local Planning Coordination/ Assistance



## Community Investment